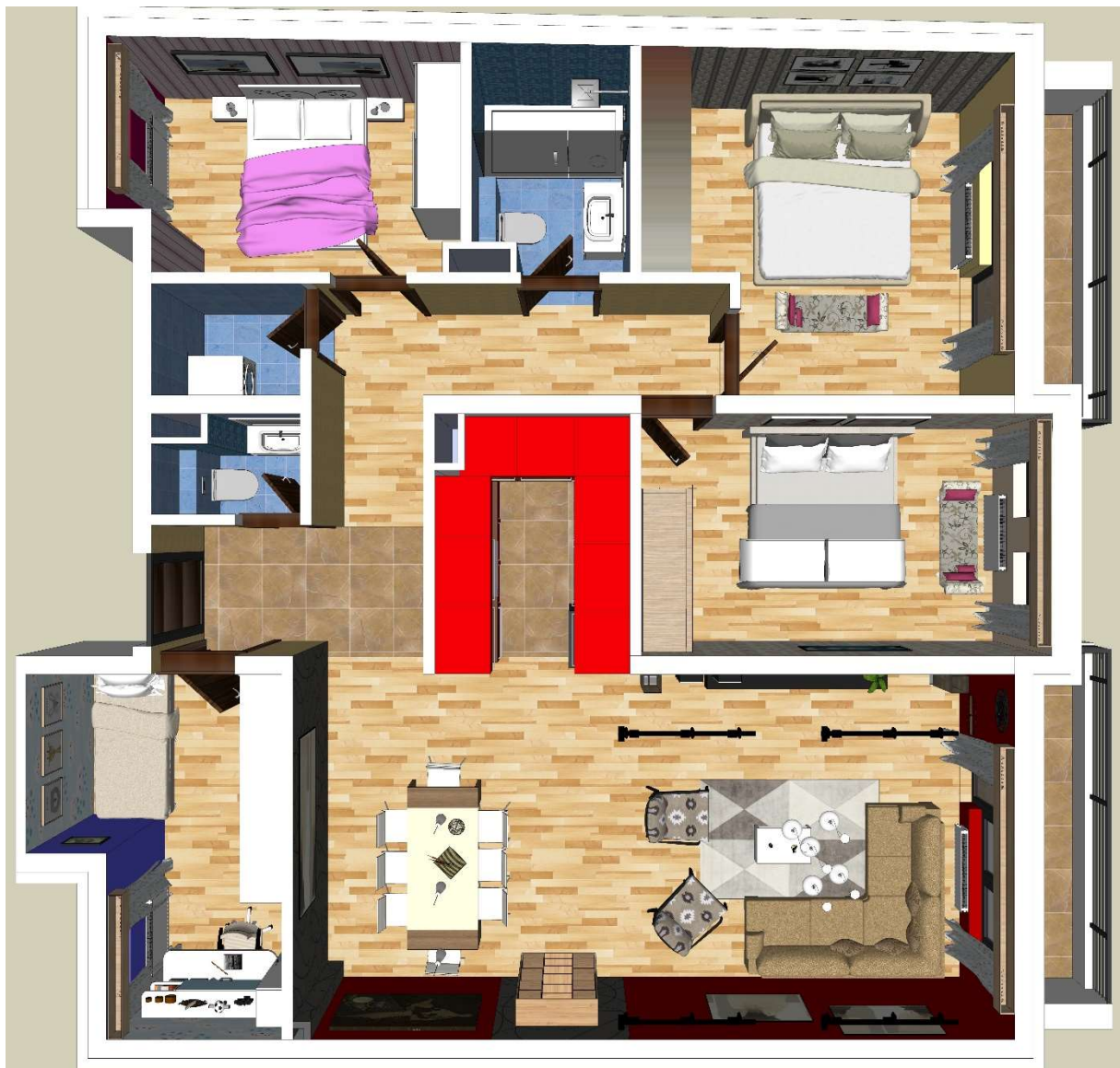
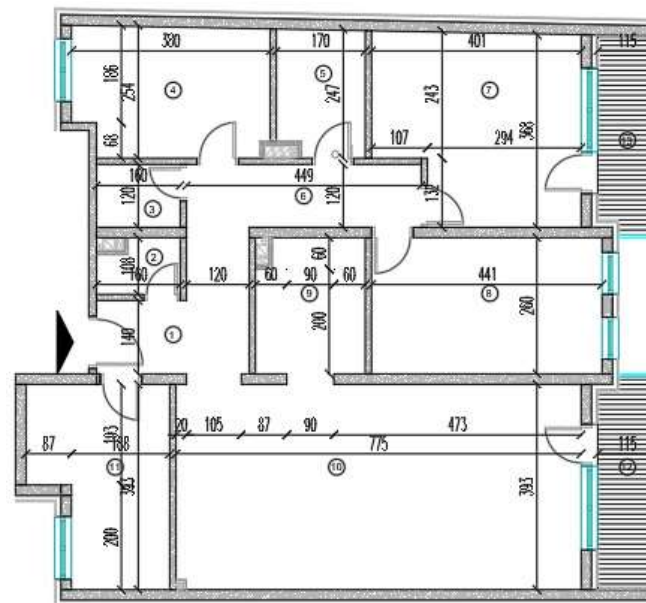


STAN 8



LAMELA 2		
2.SPRAT +5.64		
STAN 8 - TROSOBAN		
1.	HODNIK	5,70
2.	TOALET	1,49
3.	VEŠERAJ	1,86
4.	SOBA	9,10
5.	KUPATILO	4,01
6.	PREDSOBLJE	5,39
7.	SOBA	13,42
8.	SOBA	11,47
9.	KUHINJA	5,26
10.	DNEVNI BORAVAK I TRPEZARIJA	30,42
11.	SOBA	9,07
12.	TERASA	4,78
13.	TERASA	4,47
UK.KOR. POVRŠ. -3% [M2]		103,52



STAN 8

