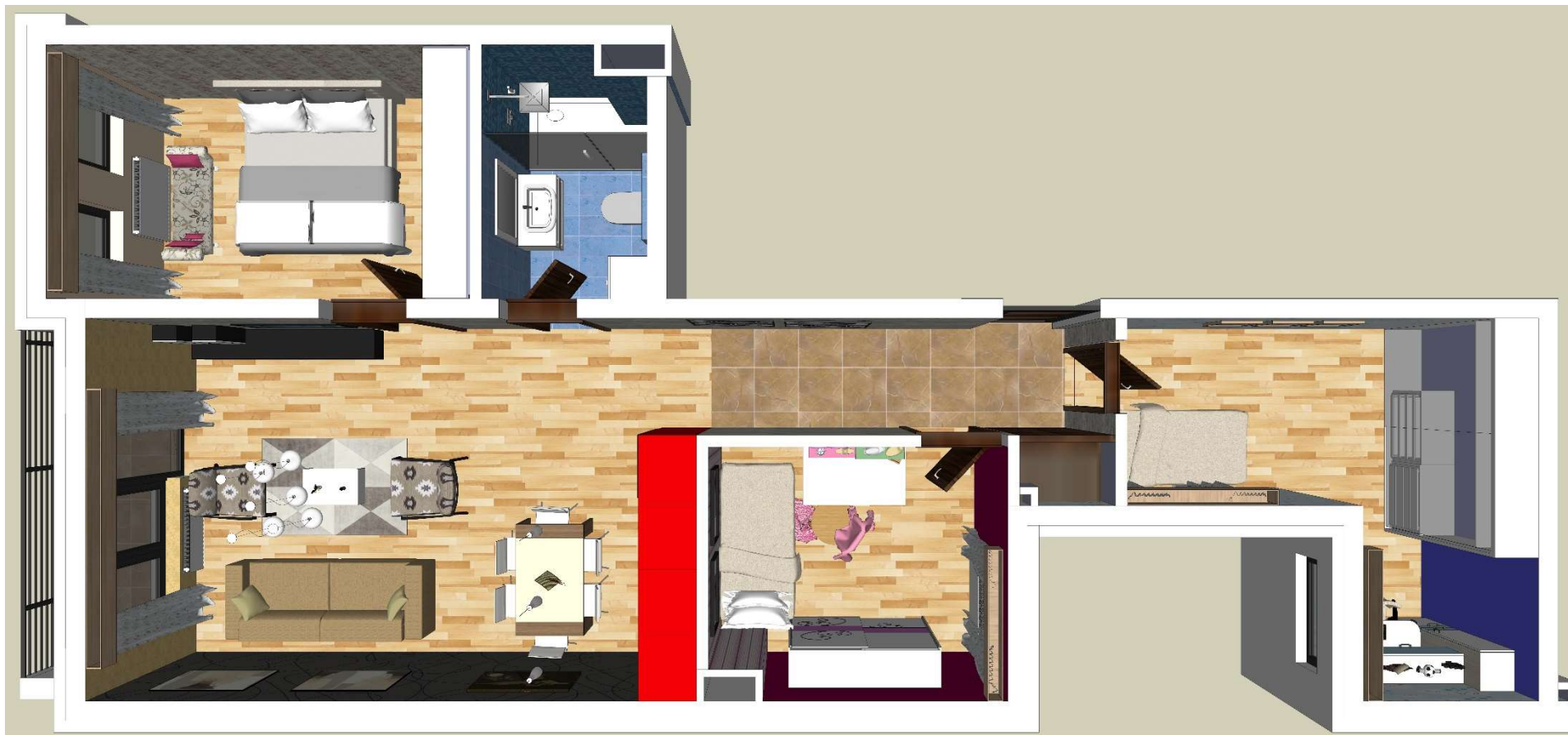
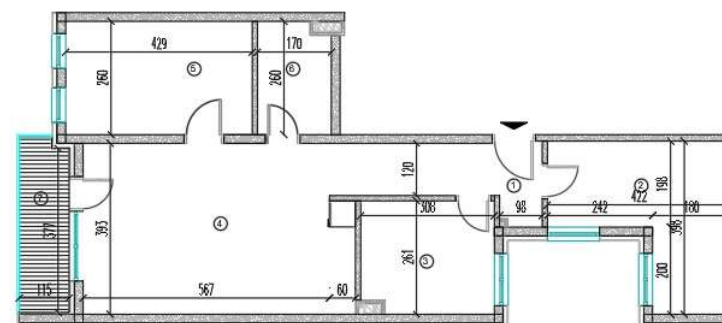


STAN 5



LAMELA 2		
1.SPRAT +2.82		
STAN 5 - DVOSOBAN		
1.	HODNIK	6,65
2.	SOBA	11,49
3.	SOBA	7,86
4.	DNEVNI BORAVAK, KUHNJA I TRPEZARIJA	23,85
5.	SOBA	11,15
6.	KUPATILO	4,28
7.	TERASA	4,83
UK.KOR. POVRŠ. -3% [M2]		68,15



STAN 5

