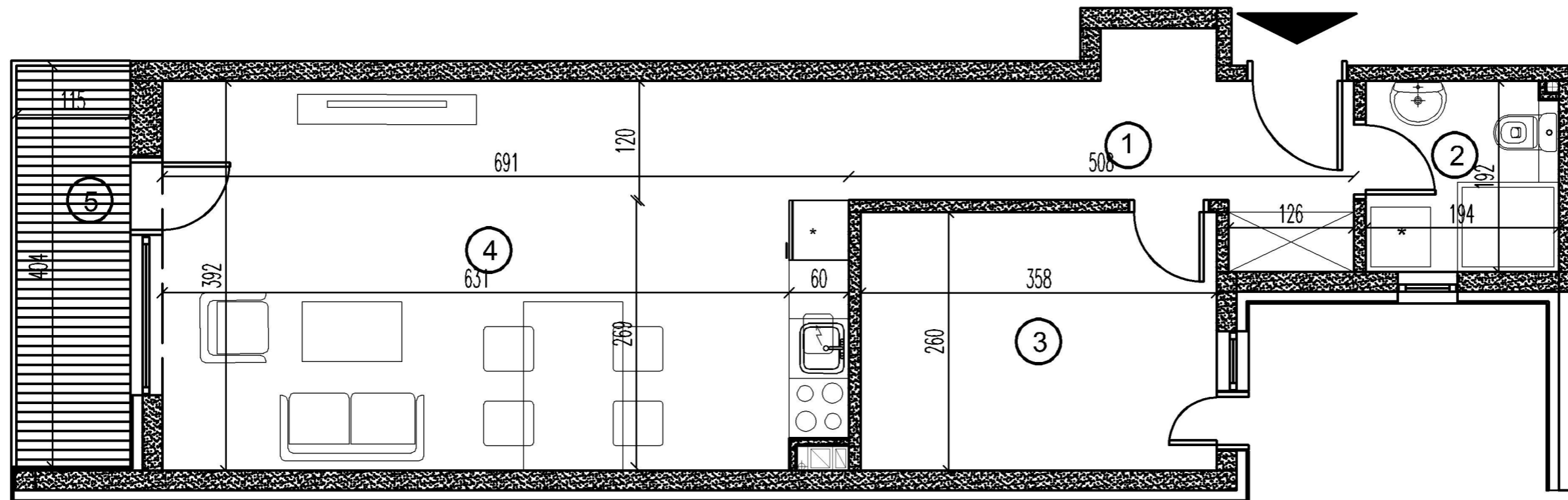


LAMELA 1

3.SPRAT +8.64

STAN 9 - JEDNOSOBBAN

1.	HODNIK	7,62
2.	KUPATILO	3,72
3.	GARDEROBER	9,31
4.	DNEVNI BORAVAK KUHI- NJA I TRPEZARIJA	27,03
5.	TERASA	4,91
UK.KOR. POVRŠ. -3% [M2]		51,22



DATUM:
