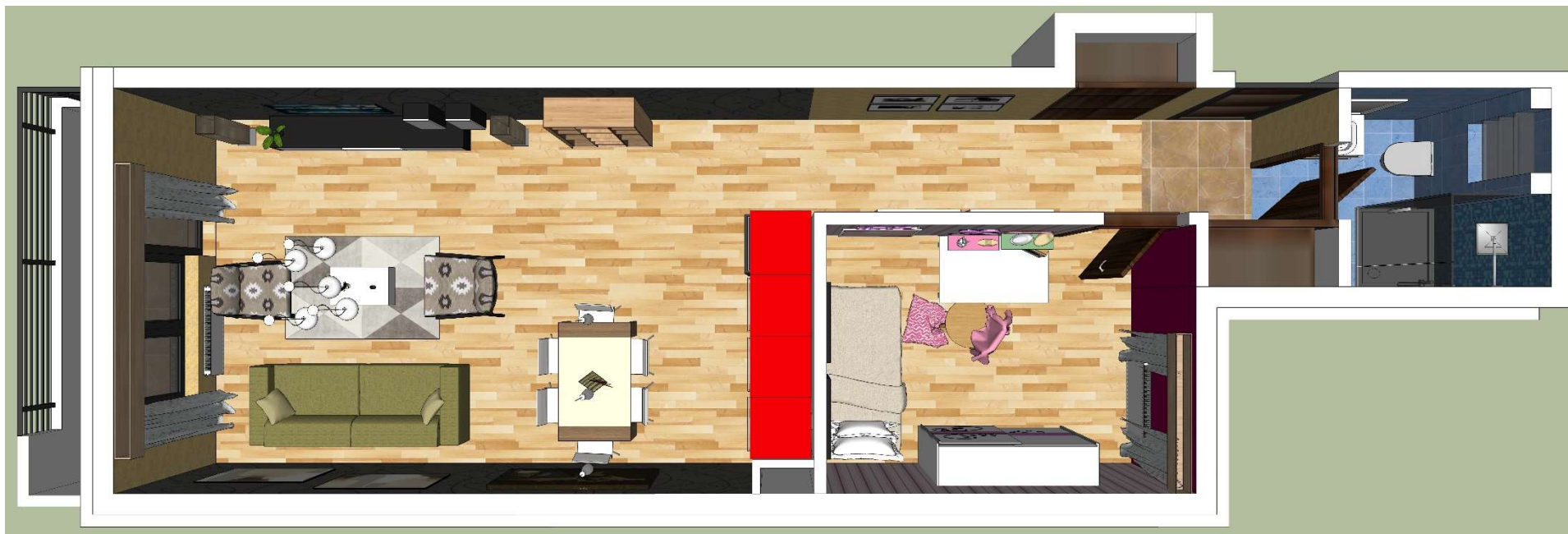
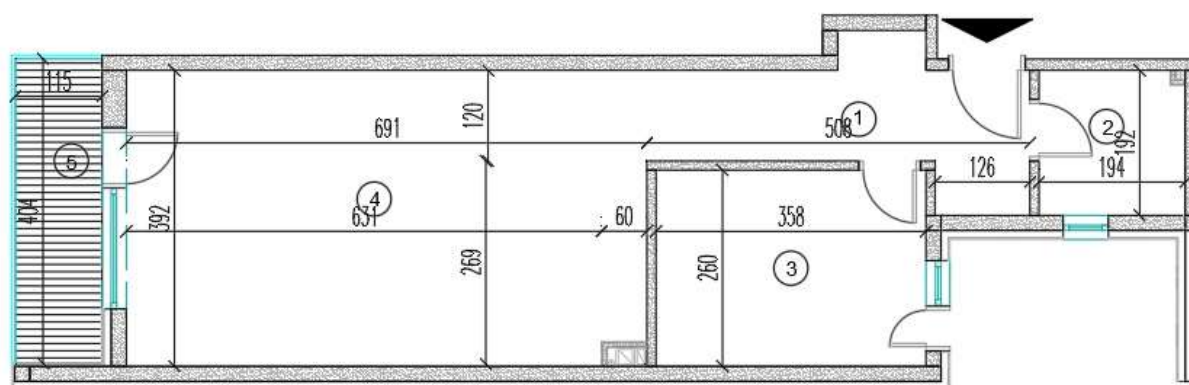


STAN 3



LAMELA 1		
1.SPRAT +2.82		
STAN 3 - JEDNOSOBBAN		
1.	HODNIK	7,62
2.	KUPATILO	3,72
3.	SOBA	9,31
4.	DNEVNI BORAVAK KUHNJA I TRPEZARIJA	27,03
5.	TERASA	4,91
UK.KOR. POVRŠ. -3% [M2]		51,22



STAN 3

